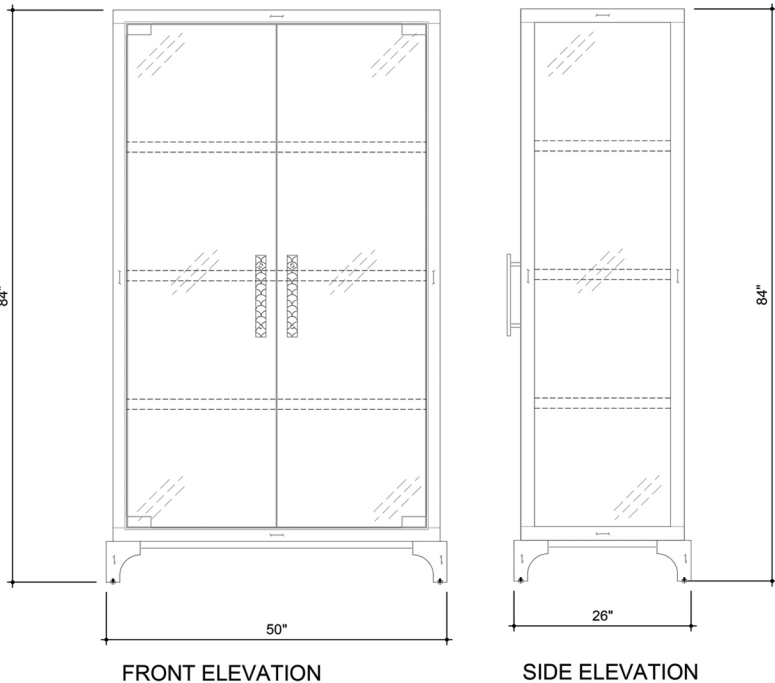




LUCIA DISPLAY CABINET

SPEC SHEET



Lucia Display Cabinet:
50" w x 26" d x 84"h

Wood framed cabinet with Starfire tempered glass panels at back & sides; (2) tempered Starfire glass doors and polished metal footrest; (3) adjustable wood shelf frames with tempered glass insets; concealed LED lighting with hidden sensor; (2) Custom Bronze Quora Pulls with dual polished/satin finishes; wood solids – see wood selections. Materials shown: High Gloss Macassar Ebony with Starfire Glass and Polished Brass Metal