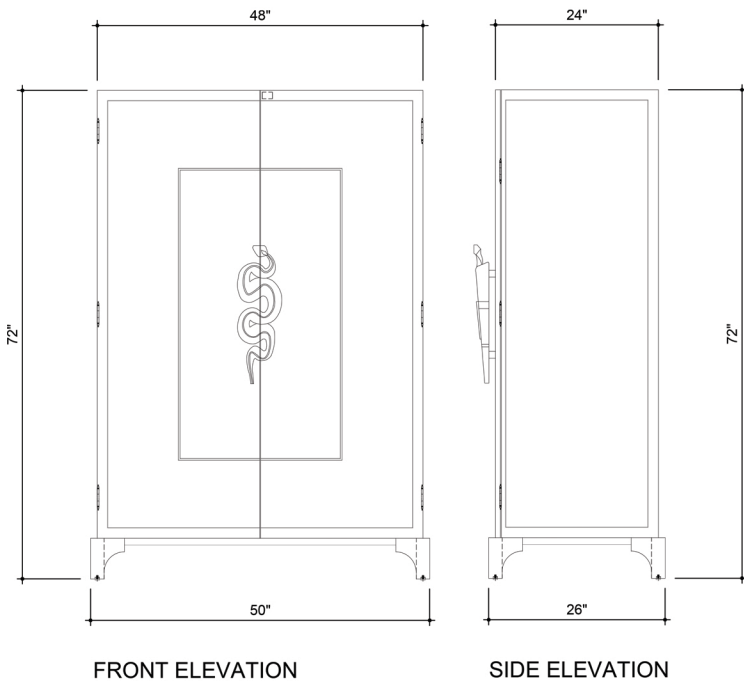




# BELLA ACCESSORY CABINET

## SPEC SHEET - SIZE OPTION B



**Bella Accessory Cabinet:**  
Size Option B: 50" w x 26" d x 72" h

Solid wood cabinet with polished metal footrest; (2) doors with metal reveal at door fronts; custom bronze Serpentine Pull with dual finish polished/satin; wood solids & high gloss ivory finish; (1) large fixed shelf above; (8) vertical pullout trays with ivory leather inserts and custom fixed bronze metal knobs for necklace storage; (2) pullout display shelves with an ivory leather inset; (8) horizontal drawers with ivory leather inserts - (4) tray design options; (2) larger spaces below for i.e. safe; concealed LED Lighting with sensor; see wood selection options. \*A finish revision has been made to the inside back and side panels of the Bella Cabinet. They will be produced with a satin ivory finish to match the color of the accent ivory at the doors. Material shown: High Gloss Macassar Ebony with Accent High Gloss Ivory Wood and Polished Brass Metal